

What's New in Progression 7.6.300?

This document contains overviews on enhancements to Progression version 7.6.300. For detailed steps on running each enhancement, please see the Progression 7.6.300 online help file, downloadable from the Progression Reference Library.

Enhancements to Order Entry were significant. For detailed steps on each of the Order Entry enhancements, please see the document, Order Entry Enhancements for 7.6.300, available in hardcopy or online in e-Synergy in the Progression Reference Library.

[A/P – Accounts Payable reapply option for credit memos.](#)

[How does this affect the AP Open File \(APOPNFIL\)?](#)

[How does this affect the AP Open History File \(APOPNHST\)](#)

[To run the reapply process:](#)

[Order Entry Enhancements](#)

[Order Entry Setup](#)

[Generate Purchase Orders from O/E](#)

[Conditions for P/O Generation](#)

[Assigned P/O Numbers](#)

[Enhancements to Entering Orders](#)

[Print Immediate Pick Tickets, Quotes, Acknowledgements, and Shipping Labels](#)

[Power Inquiry](#)

[Order Booking Report](#)

[Mass Price Change](#)

[Power Price Code Maintenance](#)

[Price Code Copy](#)

[Price Code Reset Ending Sales Date](#)

[Mass Price Code End Date Change](#)

[Billing in Picking Sequence](#)

[Immediate Invoice Printing from Select for Billing](#)

[Process Flow of Order Entry with Enhancements](#)

[Credit Card Processing](#)

[P/O – Master Order Copy](#)

[P/R – Mass Update for Deduction Upper Limits](#)

[EDI Enhancements](#)

[Streamline EDI 856 creation](#)

[Support for Bill of Lading- 17 character VICS number](#)

[L/P – Consolidation of L/P transactions into Payroll](#)

[Barcode – Add Out-Of-Tolerance override flag to Barcode Receivings import file.](#)

[S/M – Add Maintenance Expiration Date to Help About Progression Display](#)

A/P – Accounts Payable reapply option for credit memos.

In previous versions of Progression, in Accounts Payable there was no way to remove a credit memo from a voucher and reapply it to another voucher. You also could not remove a credit memo that was open on an account (applied to zero) and apply it to a voucher. Instead, you had to cancel the Credit Memo, and then re-enter it with the correct apply to information. In this version of Progression, a new Reapply option has been added that allows you to remove a credit memo from a voucher and apply it to a different voucher, or remove an open credit memo from an account (applied to zero) and apply it to a voucher. Only credit memos can be reapplied in Accounts Payable.

Notes: The following restrictions apply:

- A credit memo applied to a fully paid invoice cannot be reapplied.
- A credit memo can only be reapplied to another existing invoice for the same vendor or to zero.
- A credit memo that is fully paid can not be reapplied.
- A credit memo that is applied to a fully paid invoice can not be reapplied.
- Credit memos can be partially or fully reapplied.
- The reapplied amount can not exceed the amount for the credit memo applied to the selected invoice.
- The available discount will be automatically reapplied based on the percent of the reapplied amount versus the total amount available to reapply.

The new application is located under the Accounts Payable processing menu. When you open the application, you are prompted for a vendor number and the credit memo voucher number to be reapplied. Once selected, Progression displays the first invoice that the credit memo is currently applied to and the amount applied to this invoice. You will be prompted if this is the "correct record" until the correct entry is selected or no more entries are found for the credit memo. You are then prompted for the new invoice to be applied and the amount of the credit memo to be applied. You can reapply any amount up to the total amount of the selected credit memo. Once save, Progression posts the appropriate reapply records to the AP Open Item file (APOPNFIL) and the AP History file (AOPNHST).

How does this affect the AP Open File (APOPNFIL)?

If the total amount is reapplied, the existing entry for the credit memo is deleted from the open item file and replaced with the new entry. If a partial reapply is performed, the amount on the existing open item entry is adjusted and a new entry is added to the open item file for the new apply record. In addition to the changed amount field, the following fields will be changed to reflect the new applied to invoice – Ap-Open-Inv-Apply-To-No, Ap-Open-Inv-Apply-To-No-1, and Ap-Open-Inv-Apply-To-No-5. Also, the discount available is adjusted based on the percent of the amount reapplied versus the amount available to reapply. If part of this credit memo is already applied to an invoice and an additional amount needs to be applied to the same invoice, two

records are written to the open item file.

How does this affect the AP Open History File (AOPNHST)

The reapply creates records in the AOPNHST file similar to those created in the AROPNHST record by the existing A/R Reapply option. An adjustment record ("A" type) is created to reflect the reduction of the existing open item entry and a second adjustment record is created to reflect the addition of the new reapplied entry. If a full reapply is performed resulting in the deletion of the existing open item entry, then the reference field on the history entry is "Deleted". If a partial reapply is performed, the reference field on the reduction entry will be "Re-applied to Inv: _____" and the standard reference of "Venxxxxxxxxxxxxx Cm:99999999" is added to the new entry. The journal number field in the history file will be marked as "APRAPL" on all entries created by the reapply option.

To run the reapply process:

1. Select Processes, Reapply Transactions. Progression displays the Reapply Transactions screen.
2. Enter the vendor number associated with the credit memo you are reapplying. Progression automatically displays the vendor's name.
3. Enter the Voucher No. you want to reapply. Progression displays the Original Voucher Information in the Original Voucher Fields.
4. You are prompted with the question: "Right Open Item?" Select Yes when the correct open item information appears in the Original Voucher Fields group box. This takes you to the Changed Voucher Fields group box.
5. Enter the new apply to number (New Apply To No.).
6. In the Amount field, enter the new amount you want to apply. This field defaults to the amount entered in Amount 1 field in the Open Item file.
7. Select Save.

The next time you print an aging report, the credit memo or the unapplied payment will appear in the same aging period as the voucher to which it now applies. If the amount of the credit memo equals the amount still owed on the voucher, Progression clears both from the file the next time the Open Item file is purged.

Order Entry Enhancements

Progression 7.6.300 Order Entry has many enhancements. These focus on immediate printing of various documents; immediate purchase order generation; order entry changes; viewing orders; and maintaining price code information. This is a list of enhancements:

- O/E Setup -- additional fields to support the OE enhancements
- Alternative method for generating purchase orders during Order Entry or as a separate process
- Direct access to Available to Promise information from Order Entry

- Sales history lookup from Order Entry
- Item location change from Order Entry
- Recalculate order prices during Order Entry
- Enter billing information during Order Entry
- Print Immediate Pick Tickets
- Print Immediate Quotes
- Print Immediate Acknowledgements
- Print Immediate Shipping Labels
- Print Batch Shipping Labels
- Power Inquiry by Order Number
- Power Inquiry to Customer P/O
- Power Inquiry by Ship-To
- Power Price Inquiry
- Order Booking Report
- Mass Price Change
- Power Price Code Maintenance
- Price Code Copy
- Price Code Reset Ending Sales Date
- Mass Price Code End Date Change
- Billing in Picking Sequence
- Immediate Invoice Printing from Select for Billing
- Credit Card Processing

Order Entry Setup

Order Entry Setup has two additional screens. These allow you to set defaults for immediate document printing, which includes quotes, acknowledgements, shipping labels, and pick tickets. There are defaults for generating immediate purchase orders. There are also several special processing options, which include the number of decimals for rounding in mass price change and copy; recalculation for whole order pricing; display default for power inquiry; defaulting the order line quantity shipped to the quantity ordered; and entering billing information during order entry.

The option to Generate Immediate P/O During Order Entry and the options for printing immediate quotes, acknowledgements, and pick tickets are mutually exclusive. This means that if you choose to use any of the

print immediate options (Print Immediate Quotes/Acknowledgements/Pick Tickets), you cannot use the option to Generate Immediate P/O During Order Entry. Conversely, if you choose to use the option to Generate Immediate P/O During Order Entry, you cannot use any of the print immediate options (Print Immediate Quotes/Acknowledgements/Pick Tickets).

Generate Purchase Orders from O/E

When you enter an order in O/E with a vendor number, you have the option to generate a purchase order. You can generate a purchase order by running a separate process or by immediately generating one when you complete order entry. The system creates purchase orders based on individual customer orders. One customer order can create one or more purchase orders, depending on the line item vendor numbers. This does not combine multiple customer orders into a single vendor purchase order. Each order has its own matching purchase order. Defaults for the purchase order generation come from O/E Setup, and are used during the process of generating a purchase order.

When you generate a purchase order from O/E, you can make the following changes to the purchase order:

- Cost to use -- defaults from O/E Setup
- Request date to use -- defaults from O/E Setup
- PO type
- Drop shop location
- Line item comments are copied based on the setting in O/E Setup
- Landed cost components are attached as defined by the vendor record, I/M Setup, and P/O Setup

Conditions for P/O Generation

When the system generates purchase orders, the following conditions always apply:

- Only I type, O type, selected, and unselected orders can generate purchase orders. Invoiced or posted orders will not.
- If a customer order or a line item on a customer order successfully generates a purchase order, you will not be able to generate another for that customer order. This prevents duplication.
- Changes to a customer order that generated a purchase order are not transferred to the purchase order.
- Changing the customer order line item quantity will update the purchase order line quantity as long as the purchase order has not been printed.
- When entering a customer order, you can enter only a valid vendor number to generate a purchase order. (The vendor number will default from the item's inventory location.) You can leave the vendor number blank or enter a miscellaneous vendor number, but customer orders with a blank or miscellaneous vendor number will not generate a purchase order. To exclude a line on a customer order

from generating a purchase order, purposely leave the vendor number blank or use a miscellaneous vendor.

- Comments on the customer order line items are copied to the purchase order. (The note types copied are based on the settings in O/E Setup.)
- Line items with a quantity ordered of less than one will not generate a purchase order.

Assigned P/O Numbers

When the system generates a purchase order number it uses the O/E order number-xx as the purchase order number. For example, customer order number 301 is in O/E. If you generate a purchase order from this, the purchase order number becomes 301-01. If the purchase order number already exists (in the example 301-01), then the P/O number comes from the next available purchase order number defined in P/O Setup. If a customer order has two or more line items from multiple vendors, the purchase orders are numbered sequentially. For example, customer order 302 has three line items from different vendors. The generated purchase orders become 302-01, 302-02, and 302-03.

The purchase order number consisting of an O/E order number and purchase order combination allows you to easily cross-reference P/O to O/E information.

Based on the way the system numbers purchase orders, you should have your purchasing department use a P/O number sequence that is distinctly different from the O/E number sequence. This will allow the system to create purchase order numbers based on customer order numbers.

Enhancements to Entering Orders

There are several enhancements to Order Entry:

1. Direct access to Available to Promise information -- A button, ATP, on the Enter Orders screen allows you to check the availability of an item without having to exit from Order Entry.
2. Sales history lookup -- Pressing F4 from the item number field on the Order Entry screen allows you to look up the sales history of the customer, if you have not entered an item number, or look up the sales history of an item, if you have entered an item.
3. Item location change -- This allows you to change the location on an order during order entry. However, this does not include Feature Items or Kit Items, and the order type cannot be an Invoice or Credit Memo type.
4. Price code with the commission percent -- This enhancement retrieves the proper commission percent from the OE Price Code at the time of order entry when the system looks up the normal pricing for each line item. The system displays the proper line item commission percentage before the total line item commission percentage at the end of order billing. This accommodates order types O, I, and C. To use this enhancement, the Calc Commissions Method in O/E Setup must be set to I = Itm Pct/Amt and the Commission Method in the Item Master must be set to P = Percent of Price. A field showing the commission percent is on the Price Code Maintenance screen and the Order Entry screen.

5. Commission percent change during order entry -- This enhancement allows you to change the commission percent by line item during order entry. You can change the commission percent if the Calc Commission Mthd field in O/E Setup is set to I = Item Pct/Amt. The commission percent field is initially filled with the value from the item master; a manual percent entered during order entry; or by the commission percent associated with special pricing from the price code.
6. Recalculate order prices -- This enhancement allows you to recalculate order prices based on whole order totals or product category totals rather than single line item quantity. You can recalculate order prices when adding or changing an order. You have the option to exclude line items from the re-calculation process. This prevents specific line items from being re-calculated when a price has been manually entered. The option to re-calculate order prices comes from O/E Setup (no re-calculation, product category, or whole order). The option to exclude line items from re-calculation is on Order Entry. The option to re-calculate the order prices is also on Order Entry.
7. Enter billing information during order entry -- This enhancement allows you to enter billing information when adding or changing any type of order. This is controlled by the Enter Billing Information During Order Entry field on O/E Setup.

Print Immediate Pick Tickets, Quotes, Acknowledgements, and Shipping Labels

Immediate printing options allow you to print pick tickets, acknowledgements, quotes, and shipping labels when you complete order entry. You can also save shipping labels and print them in a batch.

1. Pick Tickets -- You can print a pick ticket for regular orders or invoice type orders. The system will print one pick ticket with its corresponding items for each of the line item locations on the order.
2. Quotes -- You can print a quote for quote type orders. This opens the Print Quotes screen with the starting and ending order numbers entered.
3. Acknowledgements -- You can print an acknowledgement for regular orders or invoice type orders. This opens the Print Acknowledgements screen with the starting and ending order numbers entered.
4. Shipping Labels -- You can print a shipping label for regular orders or invoice type orders. This opens the Print Labels screen with the starting order number entered.
5. Batch Shipping Labels -- You can store shipping labels to print them later. This also allows you to select a form for them.

Power Inquiry

The power inquiries are additional views that offer a drill-down and side-by-side display of an order summary and line item details. There are power inquiries by order number, customer purchase order number, and ship-to locations.

1. Power Inquiry by Order Number -- This allows you to select all orders or only open orders. From this screen you can drill down to Order Entry View or Order Entry History View.
2. Power Inquiry by Customer P/O -- This is similar to the Power Inquiry by Order Number. However, you

view information by the customer purchase order number.

3. Power Inquiry by Ship-To -- This is similar to the Power Inquiry by Order Number. However, you view information by the ship to number for a customer.
4. Power Price Inquiry -- This allows you to look up sales and purchase history with general information about a customer and item. From this view, you can access the Item Period History View, which shows the quantity sold, quantity used, sales, and cost for the item for the previous periods.

Order Booking Report

The Order Booking Report shows booked sales, which represent orders taken over a given time. These orders are typically open orders that are partially or fully shipped. This report combines open invoices and posted orders on one report. It lists items, quantity ordered, shipping information, P/O number, invoice or order number, invoice date, and sales dollars with overall date range booking totals.

Mass Price Change

There are three changes that affect the process of mass price change.

1. You can specify the number of decimals for rounding. The system makes no rounding changes if you make an amount change.
2. You can specify a positive or negative amount change. (This is similar to the existing percent change.)
3. You can specify to update the inventory location record with the changes.

Power Price Code Maintenance

The Power Price Code Maintenance is a new application that allows you quickly enter price codes for many items without having to re-enter redundant information. This enhancement allows you to maintain only price code types 1, 3, and 6, which are price codes involving item numbers. It assumes there are no quantity breaks. You can also use this enhancement to delete the displayed price codes.

Price Code Copy

Price Code Copy allows you to easily copy a price code scheme to another price code of the same type. You can copy only price code types 1, 3, and 6, which are price codes involving item numbers. Price code types can be copied only to like price code types: type 1 to type 1; type 3 to type 3; and type 6 to type 6. When copying price codes, you can also change the prices of the new price code records. You can change prices by an amount or percent. If you change the prices by percent, you can enter a percent rounding number, and round the result from zero to six decimal places. You can see the results of rounding on the Price Code Maintenance screen when you enter the affected price code and range information.

Price Code Reset Ending Sales Date

Price Code Reset Ending Sales Date allows you to change the end date on price code records. This allows you to extend the ending period without having to enter a whole new price code record.

Mass Price Code End Date Change

Mass Price Code End Date Change allows you to make mass changes to the end date of price code records. Using this enhancement changes the selected price code records that match the old end date to the new end date that you enter. Running this for a price code type of 0, which are all types and all ranges, changes the range fields on the screen to All and disables the fields. Running this for other price code types (1 through 8), enables the range fields, and affects only the records within the range for the selected price code.

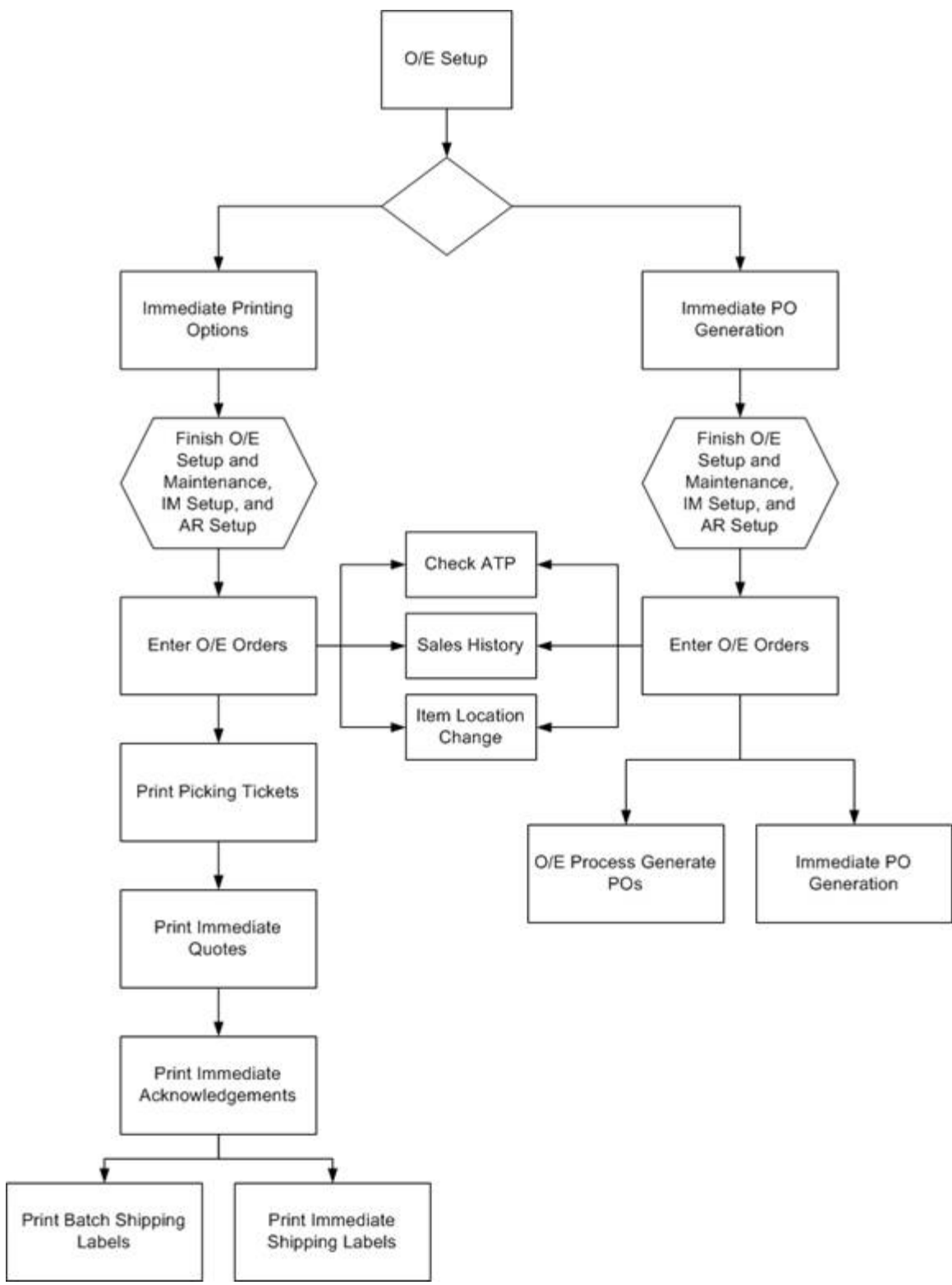
Billing in Picking Sequence

Billing in Picking Sequence allows billing in pick sequence order, which matches the sequence on pick tickets. The picking sequence is established in Item Location Maintenance in Inventory Management.

Immediate Invoice Printing from Select for Billing

Immediate Invoice Printing from Select for Billing allows you to print an invoice directly from the Order Billing screen. When you complete the billing selection, the system prompts you to print an invoice. If you choose to print an invoice, the system opens the Print Invoices screen with the starting and ending order number filled with the order you just billed. To use immediate invoice printing, you must activate the Print Immediate Invoices check box in O/E Setup.

Process Flow of Order Entry with Enhancements



Credit Card Processing

In this version of Progression, when you enter an order, you now have the option to use a credit card for partial or full payment of the order. Many customers allow payments by credit card; this enhancement allows the payment to occur during the order entry process instead of using external software.

This enhancement allows online credit card authorization and approval during order entry. Once you have completed a sales order, the credit limit on the card and accuracy of information are verified. Further, once

authorization is returned it is then stored with the card. A flag in OE Setup control allows you to authorize for the amount or the order or for a user defined amount. If the CC authorization fails then the order remains on hold until the order is edited and the authorization is attempted again. In OE Setup, if you opt to authorize for the amount of the order and the order is modified, then you are prompted to reauthorize so that the new amount is authorized. You can also bill a partial amount on the credit card (a deposit) that updates the OE Cash information in the sales order.

During order billing, credit card orders are automatically settled for the balance of the invoice.

P/O – Master Order Copy

In this version of Progression, in Purchase Order and Receiving you can copy a set standard order with a new order type of “M” to an active “O” type order. The new Master type order line item entry validates items like regular purchase orders.

Rules for Master Order:

- the order will have a status of unreleased and will not be printed
- the status can be changed to closed
- the order will not be available to link to a Shop Order
- the order cannot be entered as a drop ship

During the Master Order Copy, Progression validates line item activity dates and codes. Also, Progression validates whether an approved vendor is required for the item. Further, any landed costs associated with the Master order are copied to the newly created order. The Request and Promise Dates default to the system date.

Master orders can be copied to a different vendor. If the vendor is changed the header information is pulled from the vendor record you entered and Progression will use the “Get Current Cost” rule is enforced. The Get Current Cost check box will have each line item run through the same process that defaults the expected cost when the item is entered manually taking into account the vendor, currency dates, etc.

P/R – Mass Update for Deduction Upper Limits

In Payroll, you now have the ability to update the upper deduction upper limits for all employees associated with the specific deduction.

A new check box has been added to the Directory Update application, called Deduction Limits? If selected, Progression checks to see if the Deduction upper limit has been changed for any deduction codes. If so, Progression will update the employee records of all employees associated with the deduction code.

EDI Enhancements

Two enhancements have been added to the Progression EDI with this release.

Streamline EDI 856 creation

In previous versions of Progression, the ASN Shipment Level Maintenance screen appears with details about the ASN you are creating. You could use this screen to overwrite any of the defaults Progression automatically fills in during the creation process, to add miscellaneous information to the screen, or to view all Progression sales orders referenced under the ASN.

To streamline the outbound creation process, Progression now allows you to skip the ASN Shipment Level Maintenance screen as part of the creation process. To use this enhancement, when you are creating outbound documents via the Trx/Outbound/Create application, and you have selected document 856, Progression enables the field "Do Not Display ASN Shipment Information". If you activate this check box, Progression will not display the ASN Shipment Level Maintenance screen when you are creating 856s.

Support for Bill of Lading- 17 character VICS number

EDI now supports the VICS Bill of Lading number for both the 856 ASN and 810 invoice documents. If you are using the Progression WMS shipping system the Progression out bound creation process pulls the VICS BOL# from the Warehouse Management System (WMS) entry and no additional entry will be required in Progression, though you will be given the option to do so. If you are not using the Progression WMS shipping system you are now given the option to enter the Bill Of Lading number for both 810s and 856s.

The system has been designed to read the map used by Macola EDI during the outbound creation. The format specifies exactly what information should be included and how the outbound EDI document is to be formatted into to the flat file. If the 810 format specifies a requirement to have the VICS BOL number, Progression detects this requirement and an additional screen is available during the outbound creation process in Progression EDI. This screen is similar to the ASN Shipment Level Maintenance screen page 2 that appears during the 856 document creation. When this screen is appears, you will see the BOL # literal next to the last field. Enter your bill of lading number in this field. If you are entering the 17 digit BOL number the system is designed to calculate the check digit for you as the 17 position of that data. The calculation occurs when you exit the screen. If the format does not include this requirement the screen does not come up to stream line the 810 outbound creation process. The 856 ASN Shipment Level Maintenance screen page 2 will accommodate the BOL entry as well. Additional code has been added for Progression to calculate the check digit for the 856 VICS BOL number. The 810 outbound miscellaneous screen will also show the number 10 BOL # field. The Exact EDI Mapping team can now specify in a format the option to give the user the ability to enter specific elements of data that standard Progression does not accommodate. This additional feature is designed to help eliminate the need to enter 810 data in Gentran data entry. This does not imply that Gentran data entry has been eliminated.

L/P – Consolidation of L/P transactions into Payroll

Two consolidation options have been added to allow L/P information to be passed into Payroll without exceeding the 50 transactions per employee limit in Payroll.

A new field, "Consolidation", in the Update Earnings process allows you to consolidate payroll transactions without exceeding the 50 transactions per employee limit in Payroll. Three selections are available from the Consolidation field:

- **None** – select this option if you do not want to consolidate like transactions when passing LP information to PR.
- **By day** – If you select this option, Progression takes like transactions for an employee and compresses them into one day. Multiple transactions for a week are compressed into one transaction. For example, if you have 5 like transaction entries for the week, Progression will compress them into one entry.
- **By period** – If you select this option, Progression takes like transactions for an employee and compresses them into one period. Multiple transactions for a period are compressed into one transaction. For example, if you have 20 like transaction entries for a period, Progression will compress them into one entry.

Barcode – Add Out-Of-Tolerance override flag to Barcode Receiving import file.

An override flag has been added to the import file to allow out of tolerance receiving without generating a message that requires user intervention. This streamlines the Quick Receipt Import process.

The following is an explanation of the ASCII file layout:

Field	Bytes	Start	End	Values	Required?	Comments
Tolerance Master Flag	1	301	301	1 or blank	N	Setting this field to "Y" will ignore all tolerance codes in the item vendor master or PO Setup

S/M – Add Maintenance Expiration Date to Help About Progression Display

The maintenance expiration date for your Progression system has been added to the Progression Help, About screen. When you select Help, About, Progression displays the end date of your maintenance agreement in the **Support Exp:** field.



Created By: Karen Buchanan, Doc ID: 06.746.350

Progression 7.6.300 Enhancements